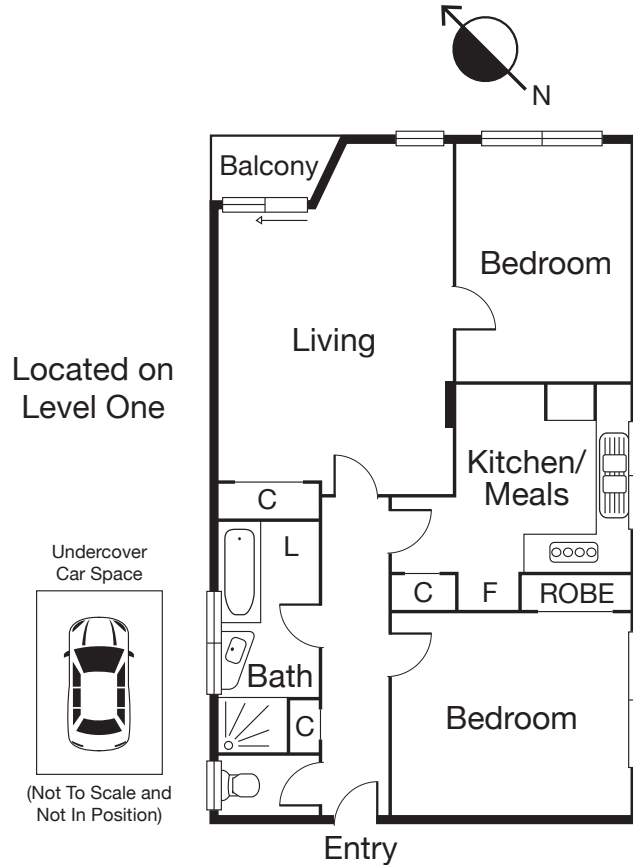


MIDDLE PARK 2/70 Patterson Street



CAYZER

MIDDLE PARK 2/70 Patterson Street



PICK OF THE BLOCK, POTENTIAL TO VALUE ADD

- Supreme 1970's front first level apartment
- Generous accommodation
- Superb north-facing aspect

Conveniently located by the golden sands of Middle Park Beach, City no.12 tram on your doorstep and strolling distance to Middle Park shopping village and café life eateries. With security foyer, the apartment comprises: Entrance, two good size bedrooms with built-in robes, front living room facing north with delightful leafy aspect, opening onto sunny balcony. Bright kitchen with meals area. Central bathroom and laundry facilities.

Note: front undercover off street parking. Part of a small block with low body corporate fees makes this an affordable first home/bayside investment.

2 1 1

Auction Saturday 8th September at 11am

Inspection As advertised or by appointment

Contact Andrew Turner 0408 211 281
Geoff Cayzer 9690 9782

Mel Ref 57 H7



Interactive Floorplan

CAYZER

Albert Park 330 Montague Street 03 9699 5999
Port Melbourne 370 Bay Street 03 9646 0812

cayzer.com.au